



BUILDING INTELLIGENCE

ALL MATERIALS ARE SOURCED DIRECTLY FROM OUR OWN QUARRIES ACROSS SCOTLAND.



CONSISTENT QUALITY

Precon Bricks utilise an intelligent Kraft curing system that accurately controls temperature and humidity, resulting in brighter colours, qualities consistent in every single brick we make.

This intelligent curing gives higher early strength, resulting in more durable products with a higher resistance to freeze thaw and chloride attack. Our state of the art manufacturing facility results in accurate repeatability of the manufacturing process - and use of our own raw materials will ensure continuation of supply for generations to come.

BETTER BRICKS.

BETTER BUILDINGS.

- Brighter colours
- Resistant to freeze thaw damage, suitable for use in severe environment category F2
- Low carbon alternative to clay bricks
- Low soluble salts, low moisture movement
- Local natural by-product from our own aggregates
- Intelligent Kraft curing ensures higher early strength, durability and greater resistance to Chloride attack
- Unique ability to blend colours giving a distinctive product
- Use of market leading Iron Oxide supplies ensuring longevity of colour retention
- Ability to make bespoke, accurate repeatable colours
- State of the art manufacturing facility
- Precision steel moulds ensure dimensionally accurate bricks





SPECIFICATION

Brick Type Single Frog	Dimensions 215 x 100 x 65mm	Compressive Strength >22N/mm ²	Durability F2 (Severe Exposure)
Type Concrete Facing Brick	Tolerances Category D3	Water Absorption 8.9% Average	Water Vapour 5/15u

Dry Weight 2.7kg Average	Shrinkage (Moisture Movement) <0.75mm/m	Resistance to Fire A1	Shear Bond Strength 0.15N/mm ²
Net Dry Density 1970 kg/m ³ Average	Soluble Salts S2	Thermal Conductivity 1.16 W/mk Dry	Precon Bricks comply with BS5628- Parts 1,2&3 :2005
Bricks per pack 372	Void packaging	Manufactured in accordance to BS EN 771-3:2011	



SOLWAY SILVER

Brick Solway Silver	Size 215 x 100 x 65mm	Compressive Strength >22N/mm2	Durability F2
Type Concrete Facing Brick	Tolerances Category D3	Water Absorption 8.9% Average	Avg. Dry Brick Weight Per Brick 2.7kg





CARNOUSTIE BLUE

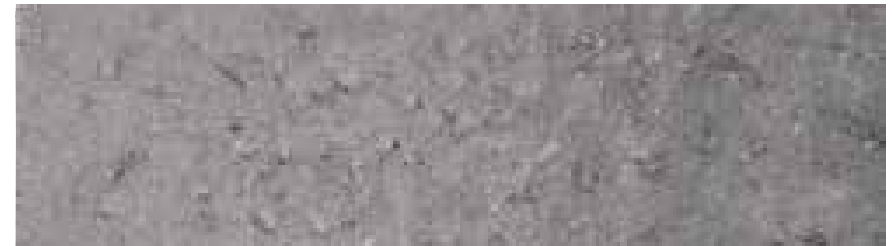
Brick Carnoustie Blue	Size 215 x 100 x 65mm	Compressive Strength >22N/mm ²	Durability F2
Type Concrete Facing Brick	Tolerances Category D3	Water Absorption 8.9% Average	Avg. Dry Brick Weight Per Brick 2.7kg





GLENEAGLES GRANITE

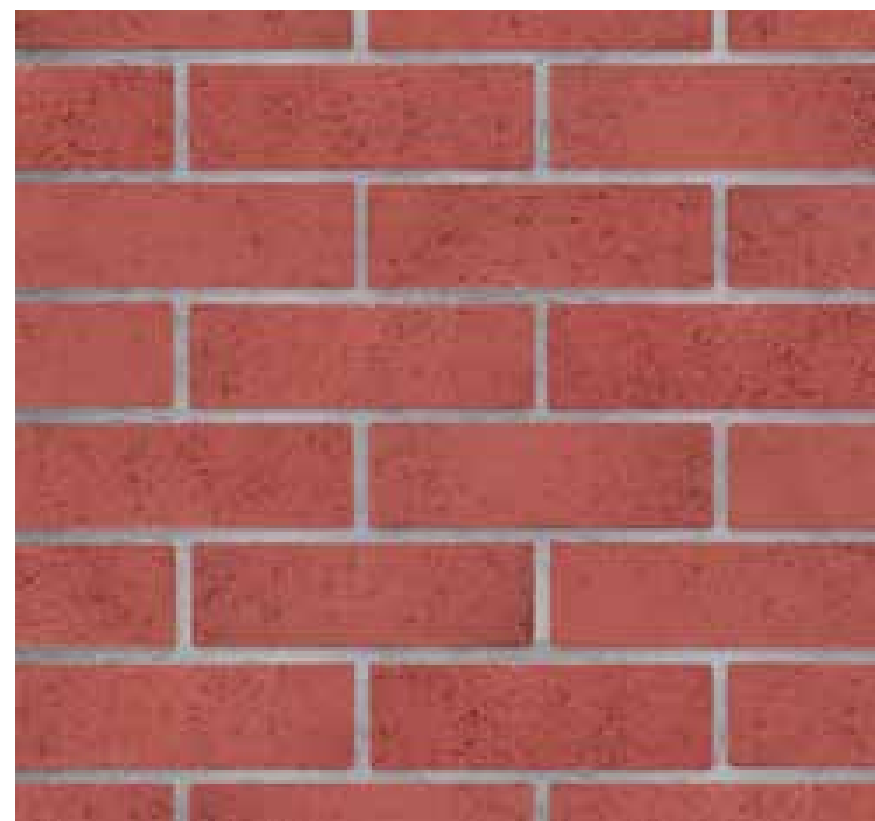
Brick Gleneagles Granite	Size 215 x 100 x 65mm	Compressive Strength >22N/mm ²	Durability F2
Type Concrete Facing Brick	Tolerances Category D3	Water Absorption 8.9% Average	Avg. Dry Brick Weight Per Brick 2.7kg





TROON RED

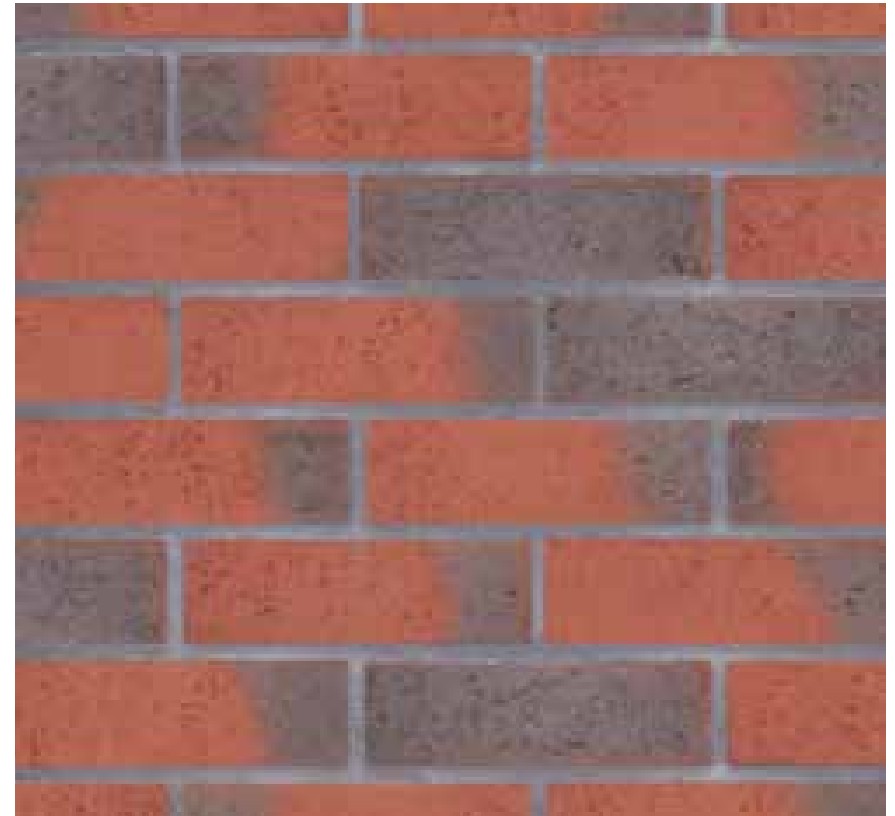
Brick Troon Red	Size 215 x 100 x 65mm	Compressive Strength >22N/mm ²	Durability F2
Type Concrete Facing Brick	Tolerances Category D3	Water Absorption 8.9% Average	Avg. Dry Brick Weight Per Brick 2.7kg





WESTBURN BLEND

Brick Westburn Blend	Size 215 x 100 x 65mm	Compressive Strength >22N/mm ²	Durability F2
Type Concrete Facing Brick	Tolerances Category D3	Water Absorption 8.9% Average	Avg. Dry Brick Weight Per Brick 2.7kg





KINGSBARN BLEND

Brick Kingsbarns Blend	Size 215 x 100 x 65mm	Compressive Strength >22N/mm ²	Durability F2
Type Concrete Facing Brick	Tolerances Category D3	Water Absorption 8.9% Average	Avg. Dry Brick Weight Per Brick 2.7kg





MUIRFIELD BLEND

Brick Muirfield Blend	Size 215 x 100 x 65mm	Compressive Strength >22N/mm ²	Durability F2
Type Concrete Facing Brick	Tolerances Category D3	Water Absorption 8.9% Average	Avg. Dry Brick Weight Per Brick 2.7kg





PRESTWICK BRONZE

Brick Prestwick Bronze	Size 215 x 100 x 65mm	Compressive Strength >22N/mm ²	Durability F2
Type Concrete Facing Brick	Tolerances Category D3	Water Absorption 8.9% Average	Avg. Dry Brick Weight Per Brick 2.7kg





ST ANDREWS BLEND

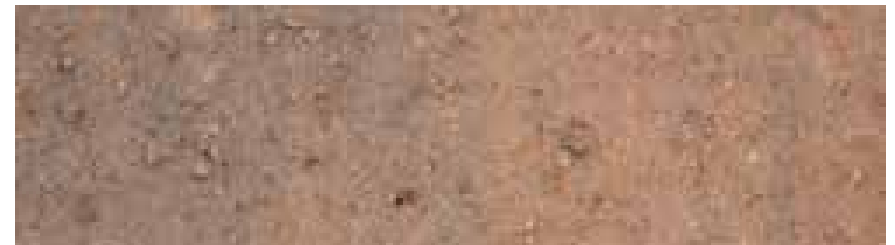
Brick St Andrews Blend	Size 215 x 100 x 65mm	Compressive Strength >22N/mm ²	Durability F2
Type Concrete Facing Brick	Tolerances Category D3	Water Absorption 8.9% Average	Avg. Dry Brick Weight Per Brick 2.7kg





BRODICK BLEND

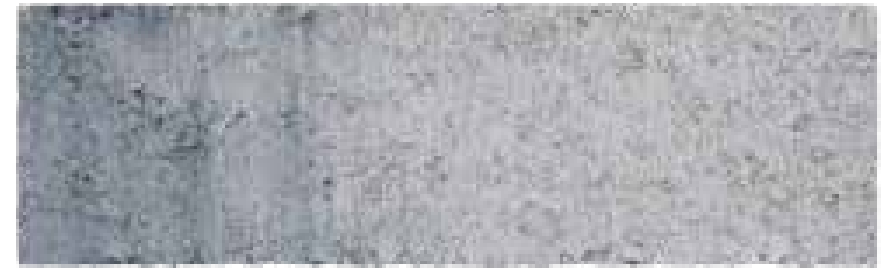
Brick Brodick Blend	Size 215 x 100 x 65mm	Compressive Strength >22N/mm ²	Durability F2
Type Concrete Facing Brick	Tolerances Category D3	Water Absorption 8.9% Average	Avg. Dry Brick Weight Per Brick 2.7kg





BUTE BLEND

Brick Bute Blend	Size 215 x 100 x 65mm	Compressive Strength >22N/mm ²	Durability F2
Type Concrete Facing Brick	Tolerances Category D3	Water Absorption 8.9% Average	Avg. Dry Brick Weight Per Brick 2.7kg





SOUTHERNESS BUFF

Brick Southernness Buff	Size 215 x 100 x 65mm	Compressive Strength >22N/mm ²	Durability F2
Type Concrete Facing Brick	Tolerances Category D3	Water Absorption 8.9% Average	Avg. Dry Brick Weight Per Brick 2.7kg





WESTERWOOD BLEND

Brick Westerwood Blend	Size 215 x 100 x 65mm	Compressive Strength >22N/mm ²	Durability F2
Type Concrete Facing Brick	Tolerances Category D3	Water Absorption 8.9% Average	Avg. Dry Brick Weight Per Brick 2.7kg





CATHKIN BLEND

Brick Cathkin Blend	Size 215 x 100 x 65mm	Compressive Strength >22N/mm ²	Durability F2
Type Concrete Facing Brick	Tolerances Category D3	Water Absorption 8.9% Average	Avg. Dry Brick Weight Per Brick 2.7kg





CASTLE STUART BLEND

Brick Castle Stuart Blend	Size 215 x 100 x 65mm	Compressive Strength >22N/mm ²	Durability F2
Type Concrete Facing Brick	Tolerances Category D3	Water Absorption 8.9% Average	Avg. Dry Brick Weight Per Brick 2.7kg





MORAY BLACK

Brick Moray Black	Size 215 x 100 x 65mm	Compressive Strength >22N/mm ²	Durability F2
Type Concrete Facing Brick	Tolerances Category D3	Water Absorption 8.9% Average	Avg. Dry Brick Weight Per Brick 2.7kg





IONA BLEND

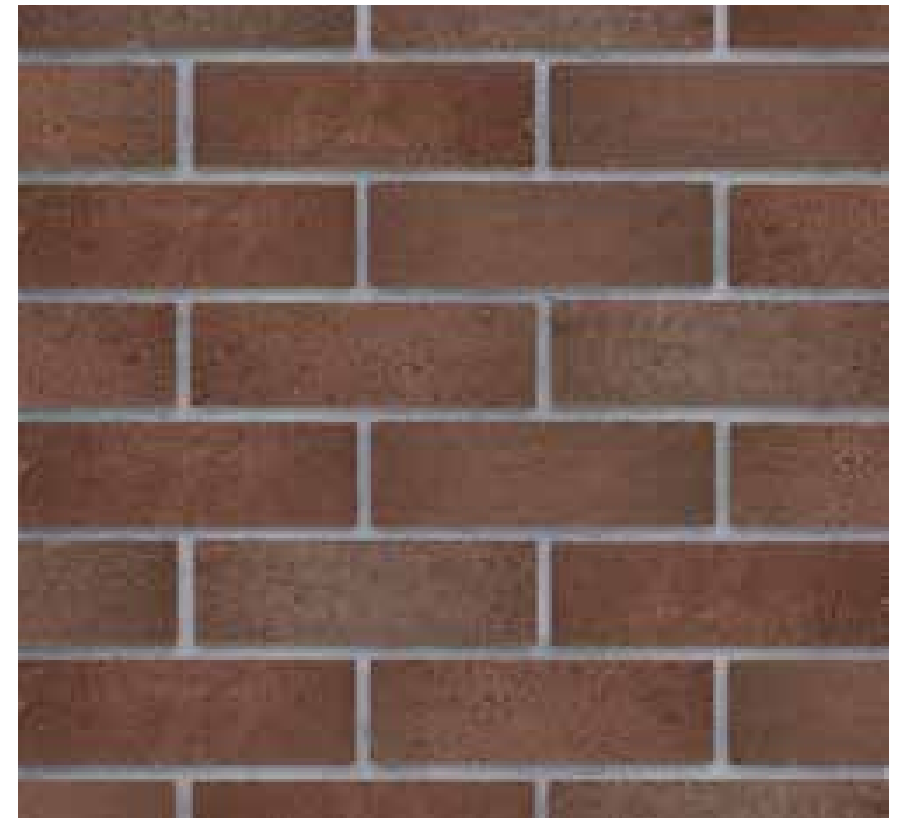
Brick Iona Blend	Size 215 x 100 x 65mm	Compressive Strength >22N/mm ²	Durability F2
Type Concrete Facing Brick	Tolerances Category D3	Water Absorption 8.9% Average	Avg. Dry Brick Weight Per Brick 2.7kg





ISLAY BLEND

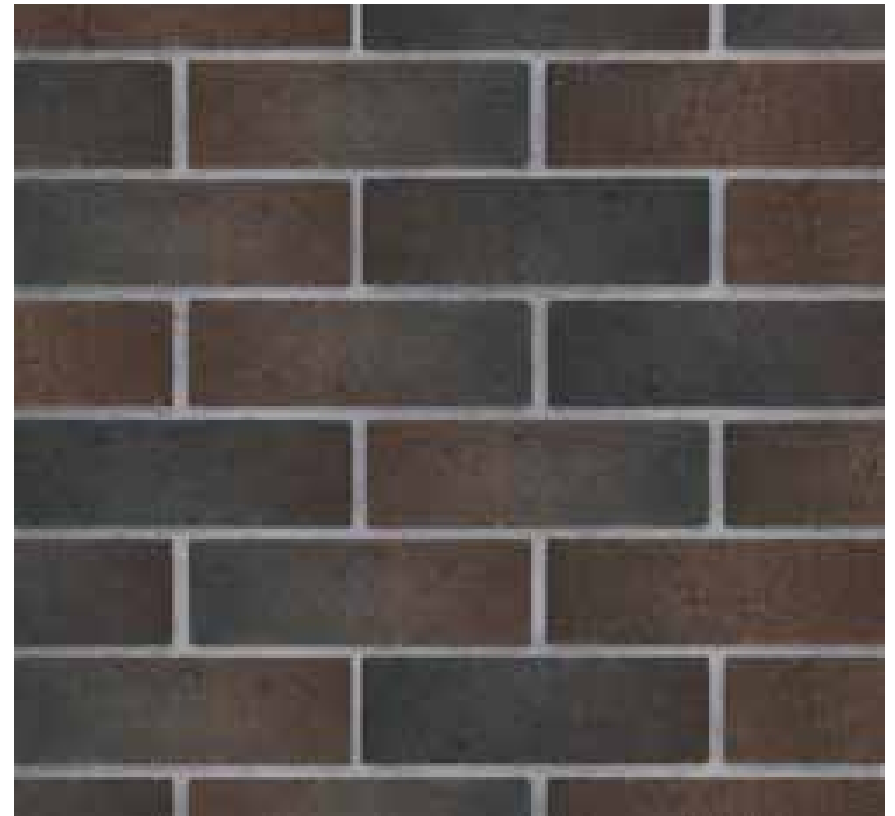
Brick Islay Blend	Size 215 x 100 x 65mm	Compressive Strength >22N/mm ²	Durability F2
Type Concrete Facing Brick	Tolerances Category D3	Water Absorption 8.9% Average	Avg. Dry Brick Weight Per Brick 2.7kg





JURA BLEND

Brick Jura Blend	Size 215 x 100 x 65mm	Compressive Strength >22N/mm ²	Durability F2
Type Concrete Facing Brick	Tolerances Category D3	Water Absorption 8.9% Average	Avg. Dry Brick Weight Per Brick 2.7kg





HARRIS BLEND

Brick Harris Blend	Size 215 x 100 x 65mm	Compressive Strength >22N/mm ²	Durability F2
Type Concrete Facing Brick	Tolerances Category D3	Water Absorption 8.9% Average	Avg. Dry Brick Weight Per Brick 2.7kg





SKYE BLEND

Brick Sky Blend	Size 215 x 100 x 65mm	Compressive Strength >22N/mm ²	Durability F2
Type Concrete Facing Brick	Tolerances Category D3	Water Absorption 8.9% Average	Avg. Dry Brick Weight Per Brick 2.7kg





SOLWAY SILVER TUMBLED

Brick Tumbled	Size 215 x 100 x 65mm	Compressive Strength >22N/mm ²	Durability F2
Type Concrete Facing Brick	Tolerances Category D3	Water Absorption 8.9% Average	Avg. Dry Brick Weight Per Brick 2.7kg





CARNOUSTIE BLUE TUMBLED

Brick Tumbled	Size 215 x 100 x 65mm	Compressive Strength >22N/mm ²	Durability F2
Type Concrete Facing Brick	Tolerances Category D3	Water Absorption 8.9% Average	Avg. Dry Brick Weight Per Brick 2.7kg





GLENEAGLES GRANITE TUMBLED

Brick Tumbled	Size 215 x 100 x 65mm	Compressive Strength >22N/mm ²	Durability F2
Type Concrete Facing Brick	Tolerances Category D3	Water Absorption 8.9% Average	Avg. Dry Brick Weight Per Brick 2.7kg





WESTBURN BLEND TUMBLED

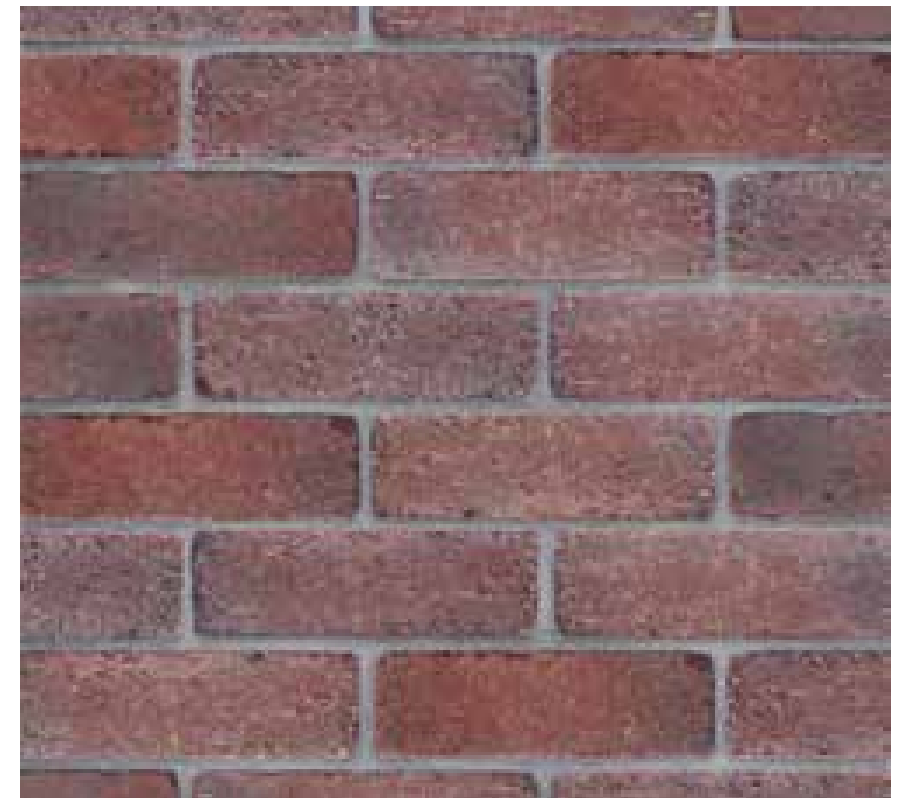
Brick Tumbled	Size 215 x 100 x 65mm	Compressive Strength >22N/mm ²	Durability F2
Type Concrete Facing Brick	Tolerances Category D3	Water Absorption 8.9% Average	Avg. Dry Brick Weight Per Brick 2.7kg





KINGSBARN BLEND TUMBLED

Brick Tumbled	Size 215 x 100 x 65mm	Compressive Strength >22N/mm ²	Durability F2
Type Concrete Facing Brick	Tolerances Category D3	Water Absorption 8.9% Average	Avg. Dry Brick Weight Per Brick 2.7kg





MUIRFIELD BLEND TUMBLED

Brick Tumbled	Size 215 x 100 x 65mm	Compressive Strength >22N/mm ²	Durability F2
Type Concrete Facing Brick	Tolerances Category D3	Water Absorption 8.9% Average	Avg. Dry Brick Weight Per Brick 2.7kg





ST ANDREWS BLEND TUMBLED

Brick Tumbled	Size 215 x 100 x 65mm	Compressive Strength >22N/mm ²	Durability F2
Type Concrete Facing Brick	Tolerances Category D3	Water Absorption 8.9% Average	Avg. Dry Brick Weight Per Brick 2.7kg





BRODICK BLEND TUMBLED

Brick Tumbled	Size 215 x 100 x 65mm	Compressive Strength >22N/mm ²	Durability F2
Type Concrete Facing Brick	Tolerances Category D3	Water Absorption 8.9% Average	Avg. Dry Brick Weight Per Brick 2.7kg





BUTE BLEND TUMBLED

Brick Tumbled	Size 215 x 100 x 65mm	Compressive Strength >22N/mm ²	Durability F2
Type Concrete Facing Brick	Tolerances Category D3	Water Absorption 8.9% Average	Avg. Dry Brick Weight Per Brick 2.7kg





WESTERWOOD BLEND TUMBLED

Brick Tumbled	Size 215 x 100 x 65mm	Compressive Strength >22N/mm ²	Durability F2
Type Concrete Facing Brick	Tolerances Category D3	Water Absorption 8.9% Average	Avg. Dry Brick Weight Per Brick 2.7kg





IONA BLEND TUMBLED

Brick Tumbled	Size 215 x 100 x 65mm	Compressive Strength >22N/mm ²	Durability F2
Type Concrete Facing Brick	Tolerances Category D3	Water Absorption 8.9% Average	Avg. Dry Brick Weight Per Brick 2.7kg





SKYE BLEND TUMBLED

Brick Tumbled	Size 215 x 100 x 65mm	Compressive Strength >22N/mm ²	Durability F2
Type Concrete Facing Brick	Tolerances Category D3	Water Absorption 8.9% Average	Avg. Dry Brick Weight Per Brick 2.7kg



CONTACT US.

BRICK SALES: 01236 433351

Email: sales@patersonsquarries.co.uk

Patersons Quarries Ltd,

Gartsherrie Road,

Coatbridge,

ML5 2EU Scotland.

www.patersonsquarries.co.uk

PHOTOGRAPHY CREDITS

P10 The Carlisle Kid P16 Ian Paterson P20 Kelliemccoy P22 Richard Web P30 Walter Baxter P32 Chris Upon

P36 Castle Stuart Golf Course cc-by-sa/2.0 © valenta www.geograph.org.uk/p/5767113

P38 Moray Firth Sunset cc-by-sa/2.0 - © valenta www.geograph.org.uk/p/5769546



